

# MSS CUSTODIAN *i*

Custodian *i* provides real-time AS/400 or iSeries reporting. Custodian improves your management reporting by providing instant real time information, allowing managers to make important decisions more effectively.

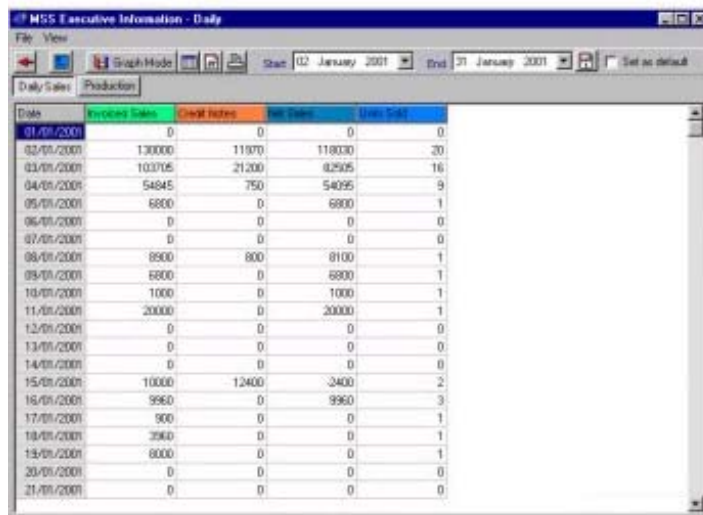
It is an easy to use information management solution providing spreadsheets based on selected AS/400 or iSeries data fields.

Instant information is available direct from your AS/400 or iSeries host. For example, manufacturing output, sales of products or costings can be merged to improve the ability to allow key decision makers in the company, to manage your business more effectively.

Custodian *i* presents data in a full colour graphical form including bar charts, pie charts etc.

## Key Features and Benefits of the System:

- Real time AS/400 spreadsheet reports.
- Automatically translates DB2 transaction data into files with summary rows and columns

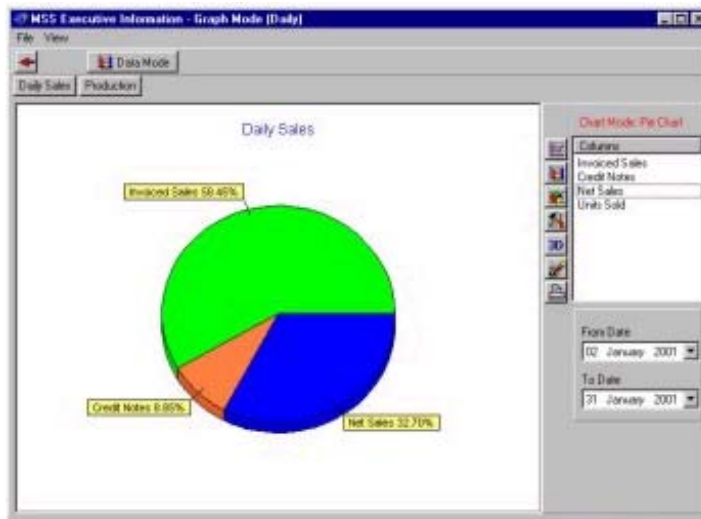


The screenshot shows a window titled "MSS Executive Information - Daily" with a menu bar (File, View) and a toolbar. Below the toolbar are two tabs: "Daily Sales" and "Production". The main area displays a spreadsheet with the following data:

Date	Involved Sales	Credit Notes	Net Sales	Units Sold
01/01/2001	0	0	0	0
02/01/2001	130000	11070	118030	20
03/01/2001	103705	21200	82505	16
04/01/2001	54845	750	54095	9
05/01/2001	6800	0	6800	1
06/01/2001	0	0	0	0
07/01/2001	0	0	0	0
08/01/2001	8900	800	8100	1
09/01/2001	6800	0	6800	1
10/01/2001	1000	0	1000	1
11/01/2001	20000	0	20000	1
12/01/2001	0	0	0	0
13/01/2001	0	0	0	0
14/01/2001	0	0	0	0
15/01/2001	10000	12400	2400	2
16/01/2001	9960	0	9960	3
17/01/2001	900	0	0	1
18/01/2001	3960	0	0	1
19/01/2001	8000	0	0	1
20/01/2001	0	0	0	0
21/01/2001	0	0	0	0

- Ability to select data from within multiple applications.
- Multi-level capability with drill down facilities to document line level.

- Report objects are saved and managed on the AS/400 or iSeries which allows for multiple users to access the reports.
- Easy to use.
- Competitively priced.
- Microsoft Excel compatible.



- Multilevel security
- Allows for aggregate calculations.
- Once a table is defined, no further modifications would be required if a new region or product etc. is created.
- Summarised data can be send to a file on the AS/400, a PC or it can be e-mailed or transferred via FTP functionality.